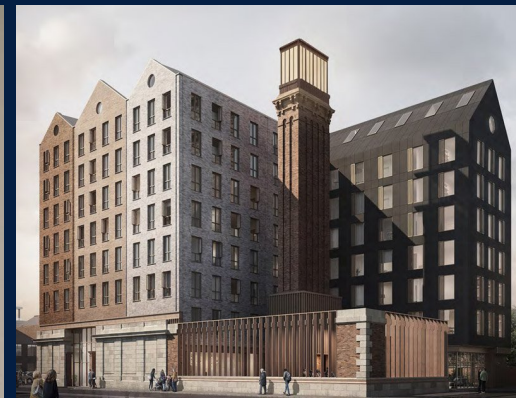
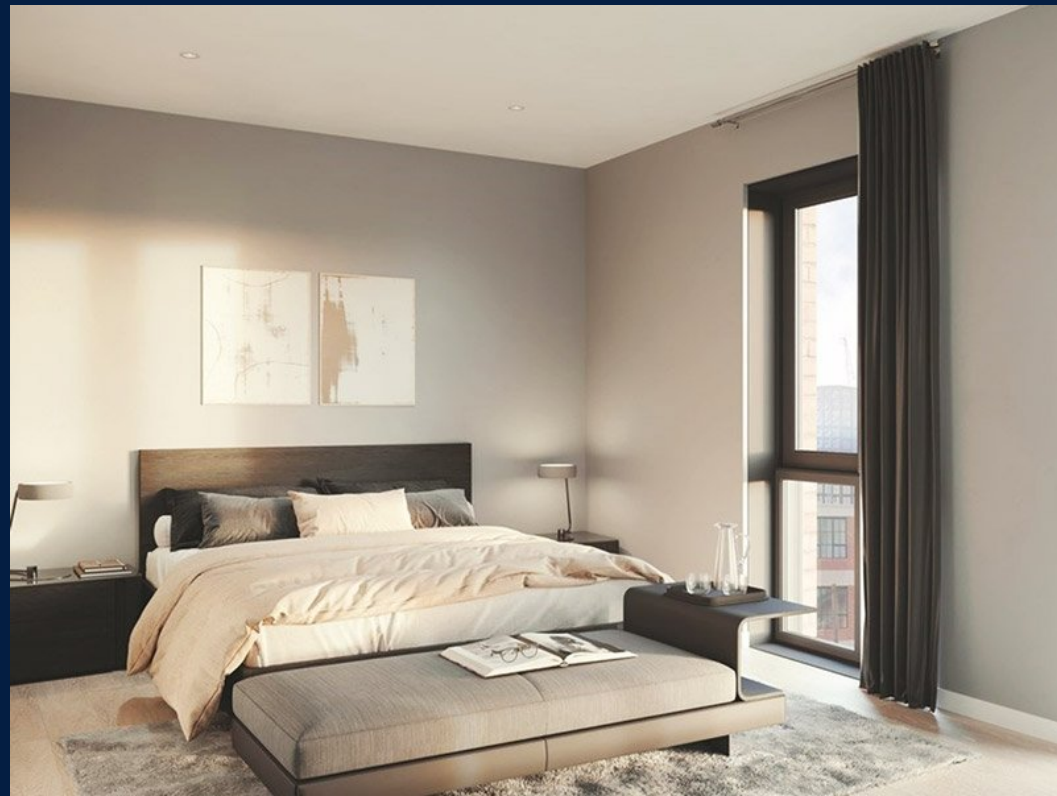


FOR SALE

RESIDENTIAL - APARTMENT 649SQFT (60SQM) / CALL FOR PRICE!

+65 9452 7189



2 - Bedroom

2 BED
60.3 sqm | 649 sqft
Unit No. 1.02



RESIDENTIAL - APARTMENT

GOULDEN STREET, NEW CROSS, MANCHESTER, M45 XX, MANCHESTER, MANCHESTER, UNITED KINGDOM

- LISTING ID: SGLD02504302
- TENURE: LEASEHOLD 999
- TITLE: N/A
- SIZE BUILT-UP: 649SQFT (60SQM)
- SIZE LAND: 16,759SQFT (1,557SQM)
- NO. OF FLOORS: 9
- FLOOR/LEVEL: N/A - LOW FLOOR
- BED ROOMS: 2
- BATH ROOMS: 1
- MAIDS ROOMS: N/A
- PARKING SPACES: N/A
- LAYOUT TYPE: OTHER
- FACING: N/A
- VIEWING: OTHER
- SELLING PRICE: **CALL FOR PRICE!**
- COMPLETION YEAR: 2023
- CONDITION: ORIGINAL CONDITION
- FURNISHING: PARTIALLY FURNISHED
- LISTING DATE: MAY 25, 2021

PEELERS YARD

Apartment for Sale: Partially furnished, 2 bedroom, 1 bathroom. Completed in 2023, this low floor unit is in original condition. Tenure: Leasehold 999

INTERIOR FACILITIES

- Internet Connection

OTHER INTERIOR FEATURES

- Dishwasher
- Intercom
- Fridge
- Oven / Microwave

EXTERIOR FACILITIES

- 24 Hours Security
- Reception / Arrival (Lounge)
- Lounge
- Roof Garden

VISIT THIS PROPERTY AT: <https://www.lizangproperty.com/property/SGLD02504302>



LIZBETH ANG - HUTTONS ASIA PTE LTD

3 Bishan Place #05-01 CPF Bishan Building
D20, 579838, Singapore

+65 9452 7189
WhatsApp Me

lizbethang@yahoo.com.sg

L3008899K
R007553E

<https://www.lizangproperty.com>



Scan QR Code

Huttons® Call for Viewing
The Agency of Choice +65-94527189